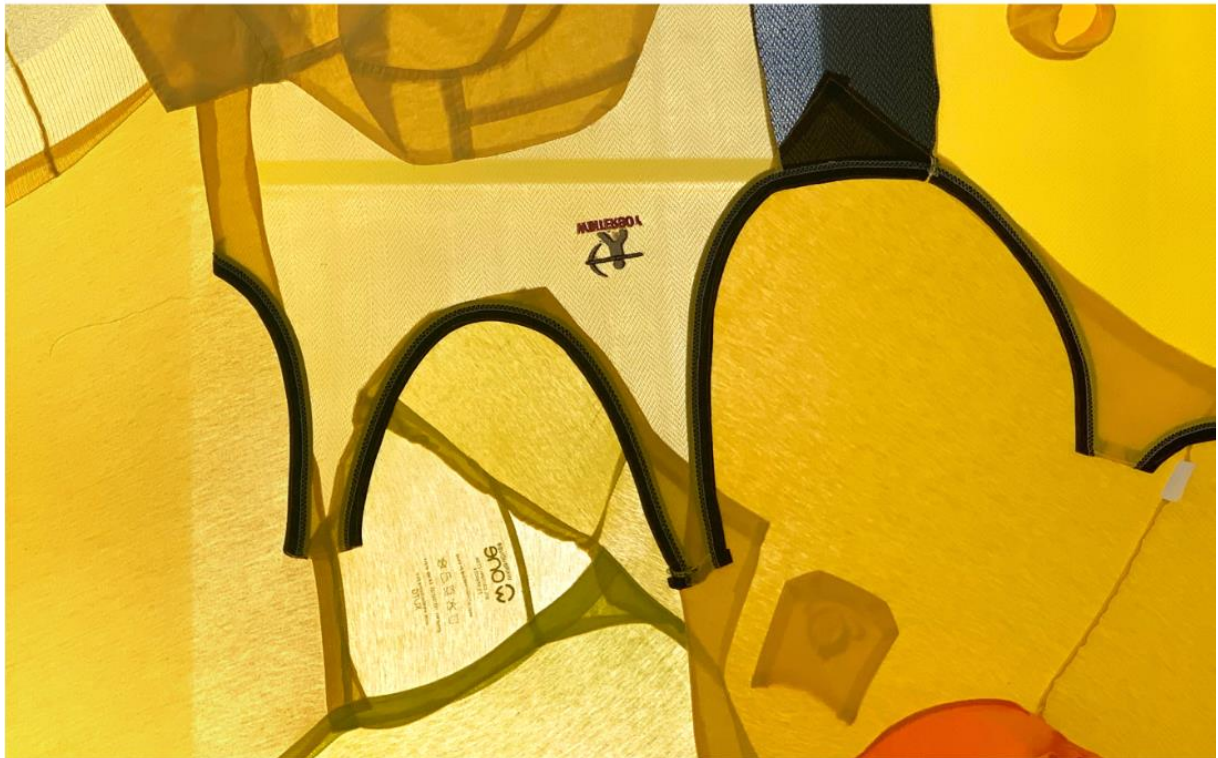


3 September 2020

Press Release

CHAT announces Special Display by Yin Xiuzhen: **Sky Patch · In Transit**

A large-scale installation at CHAT at The Mills



Yin Xiuzhen, *Sky Puzzle*, 2016-20 (Detail); Courtesy of the artist

(Hong Kong, 3 September 2020) CHAT (Centre for Heritage, Arts and Textile) announces *Sky Patch · In Transit*, a special display of large-scale installations by critically acclaimed artist Yin Xiuzhen, will be unveiled at The Hall of The Mills. Open to the public from 26 September 2020 as part of CHAT's upcoming Winter Programme 2020, this installation invites visitors to follow the common thread of textile to conduct both introspective and outward exploration of the relationship between the individual and their community.

Airport-Themed Installations – Sky Patch · In Transit at CHAT at The Mills

Yin Xiuzhen's interrogation and exploration of personal memory in the form of suitcase-shaped works were first debuted in 2015 as *Sky Puzzle* during a United Nations conference in Paris. Out of this prominent installation work, 6 of these suitcase-shaped sculptures will be incorporated into the special display of installation works at CHAT as *Sky Patch · In Transit*.

Upon their arrival at The Hall of The Mills, visitors will be greeted by an impressive series of suitcase-shaped artworks suspended in the air. Made with recycled fabrics and garments of various hues, the sculptures are a direct analogy of the sky. Beneath these artworks is an array of installations that mimic different components of the airport experience, including a baggage carousel, check-in counters and airport security scanning booths.

World-renowned Artist Yin Xiuzhen to Collaborate with Local Communities

Famous for employing textile materials inhabited by personal memories and experiences, Yin Xiuzhen's works have been collected by international art institutions such as Tate Modern in London, Mori Art Museum in Tokyo, The Museum of Fine Arts in Houston and M+ in Hong Kong. With acute observation and a poetic sensibility, Yin's artworks foster dialogue on how we navigate our ever-changing, increasingly globalised society and the intricate relationship between individuals and their immediate surroundings.

Sky Patch · In Transit is set to be a communal work. Yin will dedicate 9 pieces of the suitcase-shaped works to Hong Kong through collaboration with the local communities. Embodying a wealth of cultural and linguistic meanings and significance such as 'the greatest extent' or 'longevity', the number 9 in Chinese is a heartfelt wish from the artist to the city. 6 of the 9 pieces of the suitcase artwork will be produced through a co-creation process with CHAT, using recycled fabrics collected from local citizens and collaborators.

'Throughout the process of curating for this show, I worked closely with Yin Xiuzhen under the sombre atmosphere of a global pandemic. Yin adopts a poetic, open and humorous approach in her creative process and throughout her communication with me. I believe the show is an invitation to a timely discussion. While we are in the midst of a raging epidemic, facing a turbulent global political landscape, experiencing torn social relationships, with an uncertain and unfavourable outlook on the development of the humanities and the arts looming on the horizon, how should we act and reflect?' said Weiwei Wang, CHAT's Curator, Exhibitions & Collections.

More information regarding CHAT Winter Programme 2020 will be released in late September.

Special Display by Yin Xiuzhen: *Sky Patch · In Transit* Details

Date: 26.09-8.11 2020
Opening Hours: 10:00am-10:00pm
Venue: The Hall, The Mills, 45 Pak Tin Par Street, Tsuen Wan, Hong Kong

Please visit this link to download high resolution photos: <https://bit.ly/3lD5xeR>

– End –

About CHAT

CHAT (Centre for Heritage, Arts and Textile) is a part of the heritage conservation project of The Mills, the former cotton-spinning mills of Nan Fung Textiles in Tsuen Wan. Through its multifaceted curated programmes, which include exhibitions and co-learning programmes, CHAT aims to be an art centre that weaves creative experiences for all, inviting visitors to experience the spirit of the innovative legacy of Hong Kong's textile industry and engage in new dialogues and inspirational journeys that interweave contemporary art, design and heritage.

General Enquiries:

CHAT (Centre for Heritage, Arts and Textile) | enquiry@mill6chat.org | +852 3979 2301
RSVP for events at rsvp@mill6chat.org

Media Enquiries:

Mention PR Consultants Limited

Danny Cheng | danny.cheng@mansumpr.com | +852 3749 9878 | +852 9035 4994

Christy Mo | christy.mo@mansumpr.com | +852 3749 9878 | +852 9315 0111

APPENDIX 1: About Artist

A leading figure in Chinese contemporary art, Yin Xiuzhen (b. 1963, Beijing, China) explores themes of the past and present, memory, globalisation and homogenisation. Yin began her career after earning a BA from Capital Normal University's Fine Arts Department, Beijing, in 1989. She is best known for her sculptures and installations comprised of second-hand objects like clothing, shoes, and suitcases. Inspired by the rapidly changing cultural environment of her native Beijing, Yin arranges and reconfigures these recycled items to draw out their individual and collective histories. Her assembled materials operate as sculptural documents of memory, alluding to the lives of individuals who are often neglected in the drive toward rapid development, excessive urbanisation and the growing global economy.



Photo courtesy: Yin Xiuzhen